

# Levellogger Gold Firmware Update Release

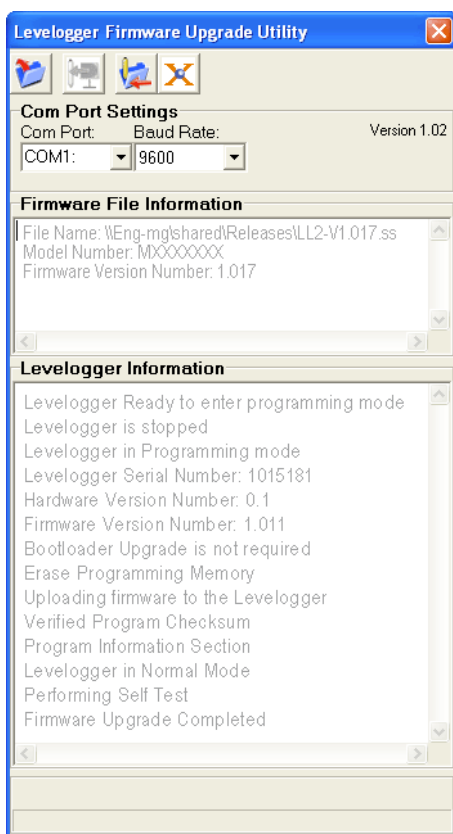
November 1, 2006



The Levellogger Gold has been designed with firmware that is easy to update whenever useful new functions or other improvements become available, as with software releases.

It would be useful for owners of Levellogger Gold units to update the firmware in all their Levelloggers, at a suitable time.

To update the firmware in your Levellogger Gold, go to the Solinst Website at: <http://www.solinst.com/Downloads/> where you can complete a brief download form that will provide you with a link to the Levellogger Gold firmware update file called LL2-V1.016.zip

- 1) Open the Solinst Firmware Update Utility (LLGfirmwareUpdate.exe), which is located in the 'Utility' folder in the Levellogger3 folder, and pick the COM port to which the Levellogger is connected. Make sure the Baud Rate is set to 9600.



- 2) Click the leftmost 'Open'  button, which should open a file dialog asking for the firmware file (\*.ssf) to upload. Navigate to the directory where the firmware file is located then click on the file and click 'Open'.
- 3) Check the 'Firmware File Information' box to make sure that the opened file is the right one.
- 4) Click the 'Upload Firmware'  button, which is the second button from the left, to start the firmware upload process.
- 5) If a communication error occurs and is indicated in the Levellogger Information Window either before the "Verified Program Checksum" message or after the "Program Information Section", then restart the upgrade process.
- 6) If, however, a communication error occurs between the "Verified Program Checksum" and the "Program Information Section" messages, then please contact Solinst. You will need to give the Levellogger Serial Number and explain the exact positioning of the error message.

Note: When conducting a firmware update, DO NOT interrupt the process prior to completion (This may take 2 – 4 minutes) . If the notice "The firmware version in the Levellogger is more recent, continue the firmware updated?" appears, you must select "Continue". Selecting "No" or other wise interrupting the Update process will make the Levellogger unable to communicate with Levellogger software. To correct this, the firmware must be re-updated, and allowed to fully complete installation. Installation is not complete until a note appears at the base of the program window indicating "Firmware Update Complete".