

Synchronize your Computer Clock to the World Clock

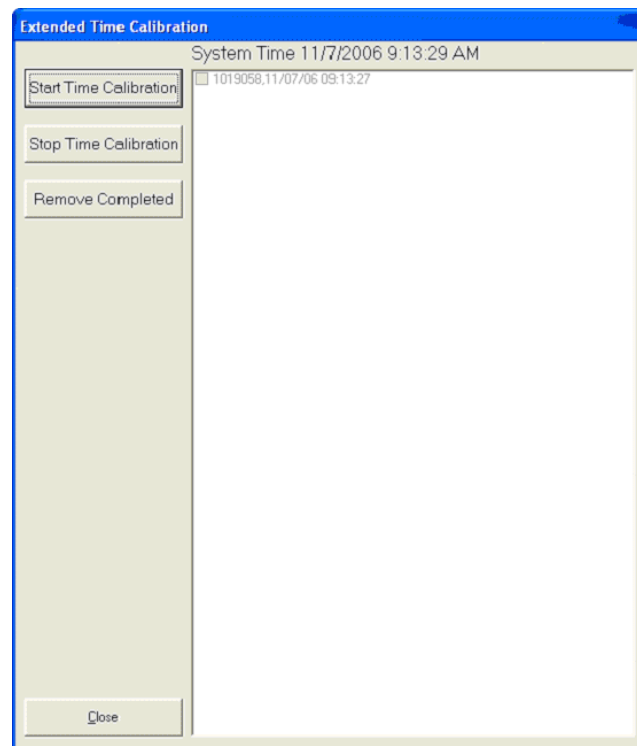
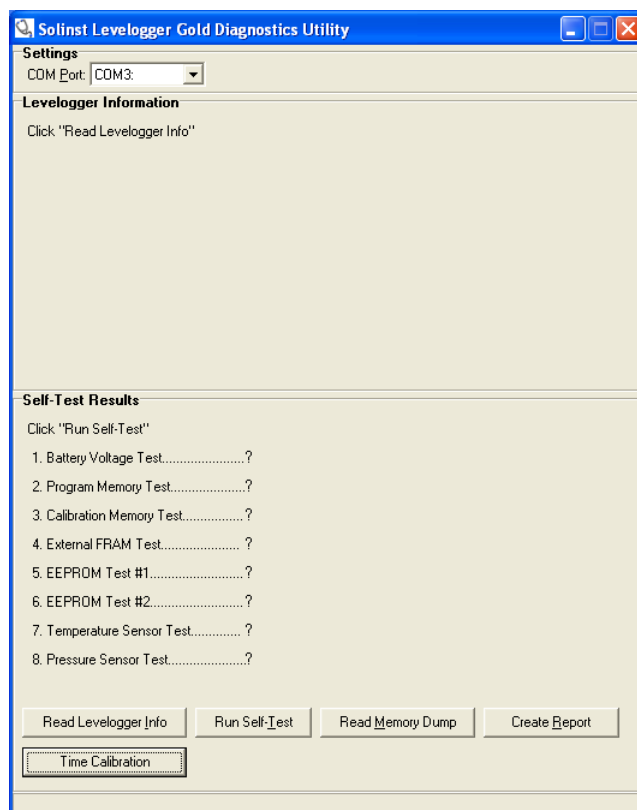
Notes: 1) Clock Synchronization instructions are for Windows XP users only.
2) An internet connection is required for this procedure.

- 1) Click the clock on the bottom right side of your task bar.
- 2) Click the internet time tab
- 3) Choose server to sync with
- 4) Click update now. (Your computer clock is now synchronized with the 'World Clock')

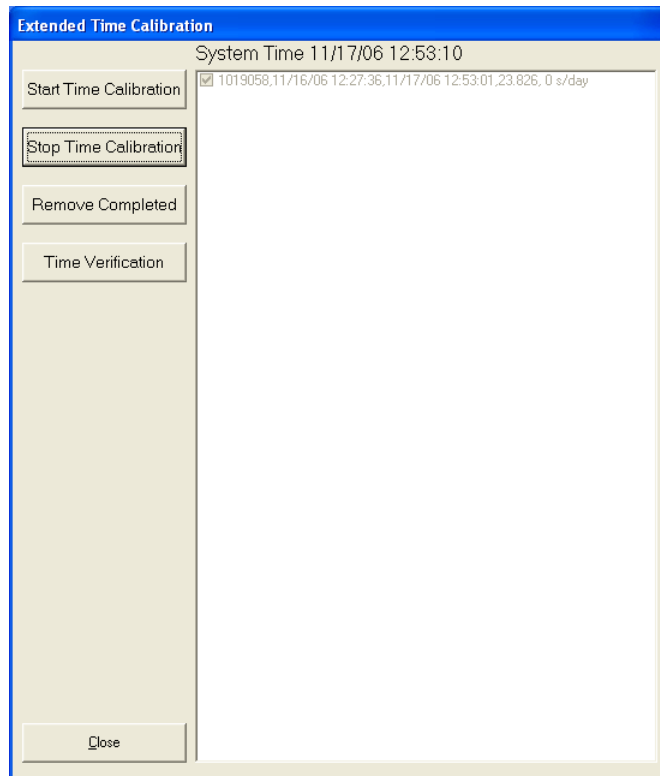
Note: If you are unable to synchronize your computer to the internet world clock, please ensure that the computer system clock is synchronized to another reliable time source.

Synchronize your Levellogger Gold to your Computer Clock

- 1) Select the proper COM Port and click the "Time Calibration" button in the Diagnostic tool.
- 2) An Extended Time Calibration Window will open.
 - Connect the Levellogger to the optical reader and click "Start Time Calibration". If the time calibration starts successfully, the serial number of the connected Levellogger will be added to the list.
 - Remove the Levellogger Gold from the Optical Reader and thread the Top Cap onto the Levellogger
 - You can repeat the above procedure to start the Time Calibration with multiple Levelloggers.
- 3) Leave the Levellogger at room temperature (25 ± 5 Deg C) for at least 20 hours.
- 4) Prior to stopping the Time Calibration, re-synchronize your Computer Clock.



- 5) Stop the Time calibration by clicking the “Stop Time Calibration” button and you will see a check mark beside the serial number, which means the calibration is successful and the calibration is finished.



- 6) Time Verification:

To determine whether the time calibration is successful, re-connect the Levellogger to the time calibration utility after a period of time (recommended time greater than 20 hours). By clicking the “Time Verification” button, the Levellogger time will be compared with the computer system time and the difference shown in seconds.

Note: If the offset is more than 5 seconds/day or does not meet your project requirements, please contact Solinst

